

MOD2's "Pre-pack" Garment Packaging Method

All about MOD2's "Pre-pack" Method for Garments

Q₁: What is a *Pre-pack*?

A₁: A *pre-pack* is a garment packaging method in MOD2 where it uses a configuration that is composed of sizes and quantities. (i.e. 1 piece of small, 2 pieces of medium, 2 pieces of large, and 1 piece of extra large).

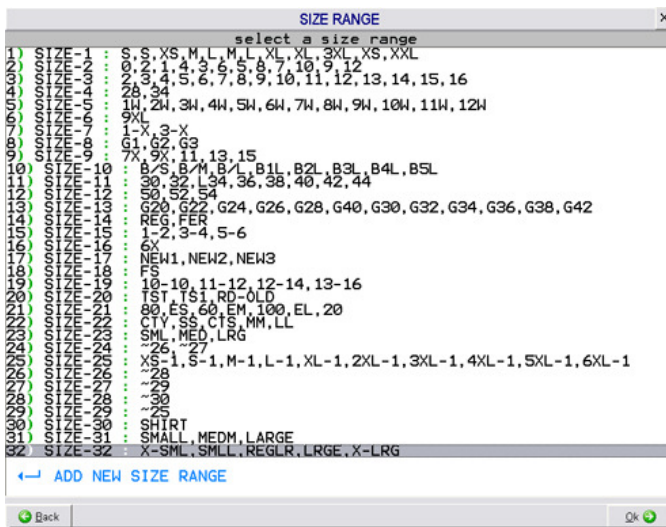
DESCR	100% COTTON	COST	\$30.00
		SELLING	\$45.00
PREPAK	1:2:2:1 <S-M-L-XL>	MIN DIS	\$0.00
NOTES	W BRAND SHIRTS	MAX DIS	\$0.00
LABDIP		WHOLESA	\$0.00
WEIGHT	N/A	PCS/BOX	24

Q₂: What is a *Configuration*?

A₂: A *configuration* is the ratio of pieces per size.

Q₃: What is a *Size Range*?

A₃: A *size range* is an arrangement of different sizes. In MOD2, you can define different size ranges that you can use for your garment items (i.e. small, medium, large, XS, S, M, L, XL).



Q₄: What is a *Pack*?

A₄: A *Pack* is composed of garment items arranged in a particular ratio which may contain several pieces per size.



Special Edition

MOD2 Inc.

An Intelligent Approach

Office Automation Software for Textile, Garment, and Home Furnishings Importers, Converters, and Wholesalers

Welcome to MOD2, Inc. We are a software firm located in Los Angeles. We have developed a software product that specializes in information and management of the day to day activities of textile, garment, and home-furnishings importers, converters, and wholesalers.

We offer our software to the following industries:

- Textile Importers
- Textile Manufacturers and Converters
- Home Furnishings Textiles and Accessories
- Apparel Importers and Garment Packages

MOD2 Inc.
3317 South Broadway,
Los Angeles, CA 90007
Tel #: (213) 747-8424
Fax #: (213) 747-9250
Email: support@mod2.com

Office Automation Software for Textile and Garment Importers, Converters, and Wholesalers

Check out MOD2.com Version 3!
www.mod2.com

MOD2 Inc. Readers Write Q&A



Q₅: How do we use the Pre-pack packaging method in MOD2?

A₅: To use the pre-pack method in MOD2, you should define your garment items as a *pre-pack*.

How? In the system, whenever you define a garment item, first it will ask you the garment packaging method (figure 5.1). On this screen, choose **Pre-packed** as your garment packaging method.

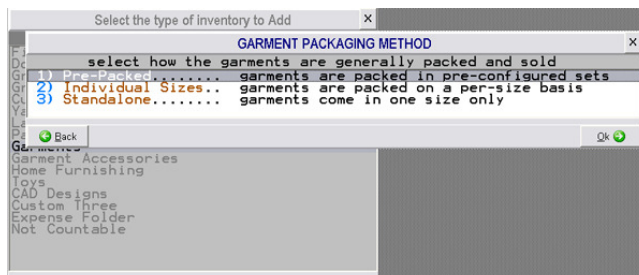


Figure 5.1

Q₆: After I choose Pre-packed, the system is asking for a pre-pack configuration. We do not have a configuration yet. How do I create a pre-pack configuration?

A₆: On that screen, hit enter on the **ADD NEW PREPACK** and then it will take you to the **SIZE RANGE** screen. Why did it take you to the size range screen? Because pre-pack configuration depends on your size ranges. Let's say you have a size range (*Small, Medium, Large, Extra Large*), you could make a configuration for this size range like **1:2:2:1**, and/or **1:2:3:3**, etc. Going back, after you choose the size range, MOD2 will then ask you for the configuration (figure 6.1).

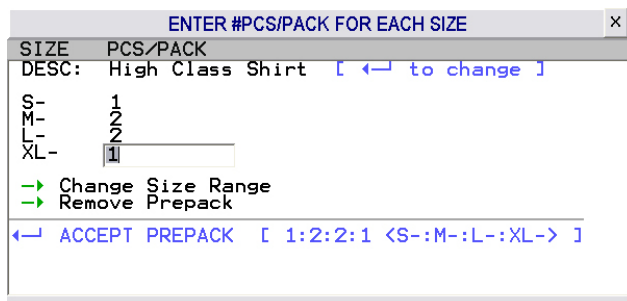


Figure 6.1

Q₇: On the Inventory Add Screen where the system asks for the *units per box*, before, we just need to enter the quantity for it. Now, why is it asking us to select the number of pieces per box from a list?

A₇: The reason why we provide you with a list of *pieces per box* is that, on pre-pack, your pieces per box will be limited and based on your pre-pack configuration. Let's say your pre-pack configuration is **1:2:2:1**, this comes to a total of 6 pieces per pack. Meaning, your minimum quantity per pack is only 6. So the list will then give you like 6 = 1 pack, 12 = 2 packs, and so on (see figure 7.1). MOD2 automatically computes what your units per box would be based on your configuration.

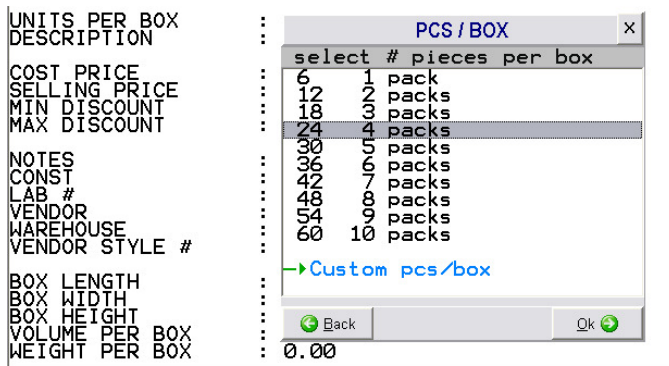


Figure 7.1

Q₁₀: Why do you prefer us to use Pre-pack in MOD2?

A₁₀: The beauty of pre-pack is that you just define the item, you define the colors, and then you define the pre-pack configuration. MOD2 knows from your pre-pack configuration what sizes and things you have. For this example to make sense, let's say I have a style called m-1100, style m-1100 comes in pre-pack and it comes with 5 colors. So I have m-1100 color black, red, green, blue, and white. If I do have m-1100 in the individual sizes too, then I need to make a m-1100-S or m-1100-A or something. And the 1100 a will have the different sizes, and that's a different scenario.

When you define a style with pre-pack, the system will ask you for a configuration. The ratio 1:2:2:1 is a very common pre-pack configuration. Because most stores they like 1 small, 2 medium, 2 large, and 1 extra large in a pack—they sell more of the medium and large than the small and extra large. Sometimes garments are ordered in a special way where the customers want more of the large and the extra large, so then in MOD2 they have to define a special pre-pack for it.

Another thing that you need to know regarding pre-pack is that the smallest denominator that you can sell in garments that is in pre-pack is ONE PACK. So let's say if you have 4 pieces in one pack, you can only sell 4 pieces at a time. You cannot sell one individual piece at a time. If you want to sell a garment by piece, then you have to define it in a different way where you also have to define individual sizes for it.

Q₁₁: Since the pre-pack method contains details like the configuration, pieces per pack, and packs per boxes, what are the details that our Sales Orders, Packing Lists, and Invoices will show?

A₁₁: Let's say you have an order for style # HCL/2000 colors *bloody/red*, *mossy/green*, and *ocean/blue* and your configuration for those items is 1:2:2:1 for sizes *small*, *medium*, *large*, and *extra large*. Your forms will display your **pre-pack configuration**, showing the sizes, ratio, the quantity per size/ratio, the units per box, the total boxes, the loose pieces, the weight, and the volume.

STYLE#	COLOR	SIZE / DESCRIPTION				QTY	PRICE	AMOUNT
		100% COTTON						
		Sizes:	S-	M-	L-	XL-		
		Ratio:	1	2	2	1		
HCL/2000	BLOODY/RED	10	20	20	10	60	\$45.00	\$2,700.00
HCL/2000	MOSSY/GREEN	10	20	20	10	60	\$45.00	\$2,700.00
HCL/2000	OCEAN/BLUE	10	20	20	10	60	\$45.00	\$2,700.00

			Sales Order
HCL/2000			

STYLE#	COLOR	DESCRIPTION				UNITS/BOX	QTY	BOXES	LOOSEPC	WEIGHT	VOLUME
		100% COTTON									
		Sizes:	S-	M-	L-	XL-					
HCL/2000	BLOODY/RED	10	20	20	10		24	60	2	12	30
HCL/2000	MOSSY/GREEN	10	20	20	10		24	60	2	12	30
HCL/2000	OCEAN/BLUE	10	20	20	10		24	60	2	12	30

			Packing List
HCL/2000			

STYLE#	COLOR	SIZE / DESCRIPTION				QTY	PRICE	AMOUNT
		100% COTTON						
		Sizes:	S-	M-	L-	XL-		
HCL/2000	BLOODY/RED	10	20	20	10	60	\$45.00	\$2,700.00
HCL/2000	MOSSY/GREEN	10	20	20	10	60	\$45.00	\$2,700.00
HCL/2000	OCEAN/BLUE	10	20	20	10	60	\$45.00	\$2,700.00

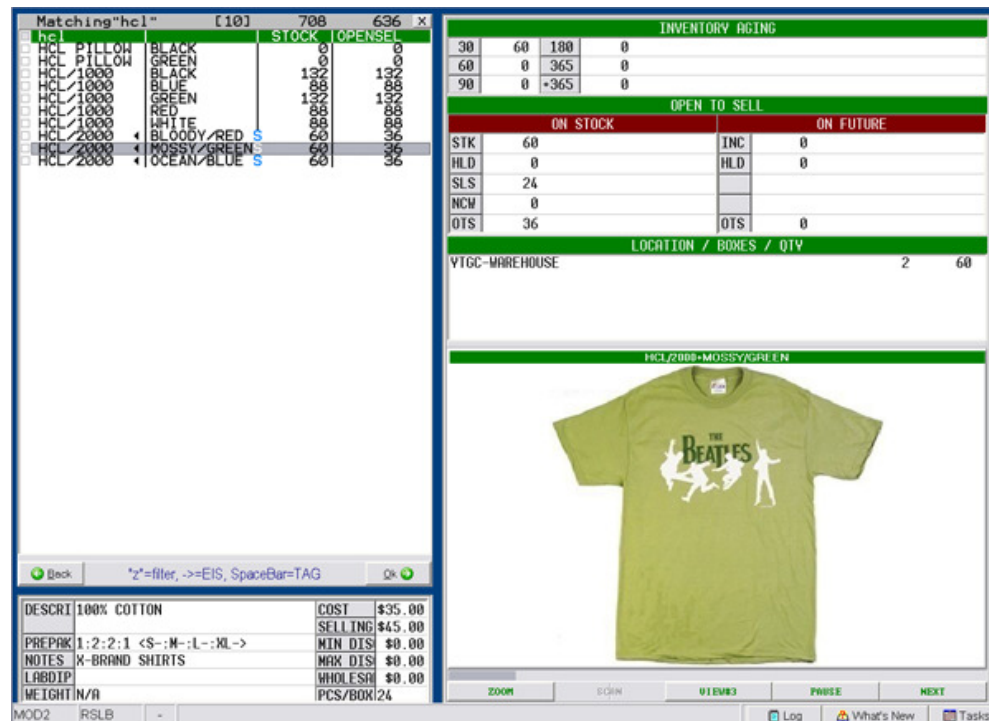
			Invoice
HCL/2000	HCL/2000	HCL/2000	

Q₈: What is the concept of the Pre-pack packaging method in MOD2?

A₈: Companies that are importers of garments typically work with packs and boxes. That means, they do not sell individual pieces that they have from a shipment. We consider that the minimum quantity they sell is a **pack**, and typically several packs are in one box. So in summary, garment importers have the garments come in **boxes**. Where in MOD2, a **box** has several **packs**, and a **pack** has a **configuration**.

Let's say a box contains 24 pieces in it. If you open the box, and let's say the box has 4 packs in it, if there are 4 packs in it, there would be 6 pieces in a box. So once I open the box, I will see 4 packs. And if I open one pack, I will see 6 garments in it. A pack could have 1 small, 2 medium, 2 large, and 1 extra large. The total of that is 6, so the configuration for a pack could be 1:2:2:1 = 6.

The Pre-pack concept is something that requires a configuration. So, when you want to define an item, you also have to define a pre-pack for it. You can have as many pre-packs as you want, but as much as possible, we don't want you to clog it.

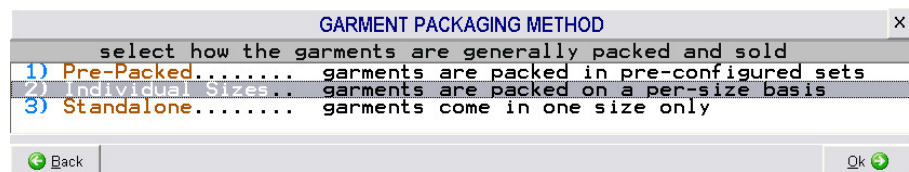


The screenshot displays the MOD2 software interface. On the left, a list of items is shown with columns for 'STOCK' and 'OPEN/SEL'. The main area on the right is divided into several sections: 'INVENTORY AGING' with a table showing counts for different periods; 'OPEN TO SELL' with sub-sections for 'ON STOCK' and 'ON FUTURE'; and 'LOCATION / BOXES / QTY' showing 'VTGC-WAREHOUSE' with 2 boxes and 60 quantity. Below this, a product image of a green t-shirt with 'THE BEATLES' logo is shown. At the bottom, a table provides details for the selected item, including 'DESCRIP', 'COST', 'SELLING', 'PREPAK', 'NOTES', 'LABDIP', and 'WEIGHT'.

Q₉: What if our company does not sell garment items by packs?

A₉: When you're working with MOD2, we do allow for both kinds of things to happen. But we recommend to our customers to use the pre-packs. But for companies who has or going to have stores or outlets, and at the end they are going to sell by individual piece, they need to define that item as an individual piece as well as the sizes too.

The way you define items by *individual piece* is still the same way. You will just be asked in the beginning of defining an item which *garment packaging method* you want. On this screen, choose **Individual Sizes**.



The screenshot shows a dialog box titled 'GARMENT PACKAGING METHOD'. It contains a list of three options: '1) Pre-Packed', '2) Individual Sizes', and '3) Standalone'. Each option is followed by a description of how garments are packed and sold. The 'Individual Sizes' option is highlighted. At the bottom, there are 'Back' and 'Ok' buttons.

Figure 9.1