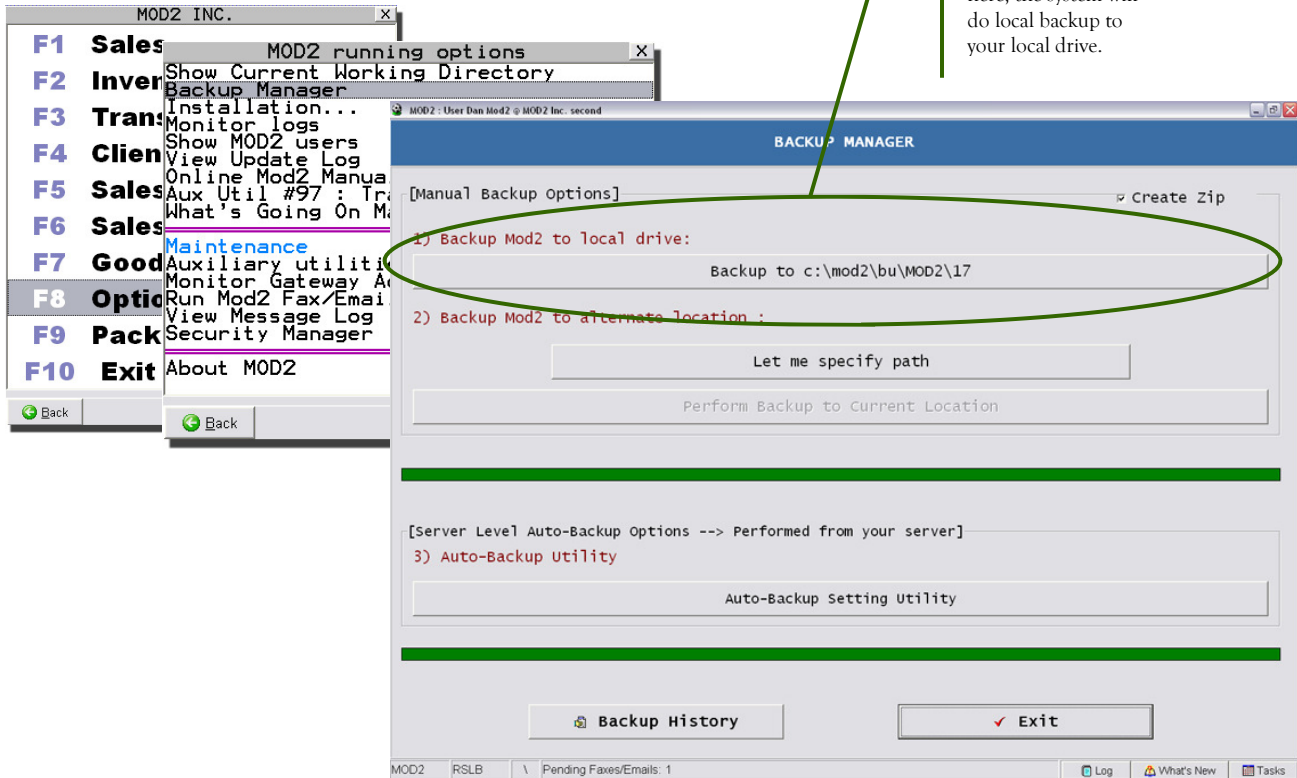


What is the purpose of doing a **Local Backup** to your workstation? How important is it for you to backup your files? Just think, what would happen if your system fails? This could be a big headache to entire company so, before its too late you should do your local backup as a habit and could save your company in doom. (See figure below)

## Typical Uses:



## Procedure:

Doing the local backup is so easy and convenient as comparing to tape or zip tape backup. From the main menu go to **Options** and press enter to see more options. And from MOD2 running options, select **backup mod2 to local drive** and the system will automatically do the local backup to your computer.

## Key Benefits:

- ⇒ It keeps MOD2 data files on your workstation.
- ⇒ Provides alternative data backup from sudden hard drive crashes
- ⇒ Helps maintain proper data backup
- ⇒ User friendly and very convenient